



# TABLE SOCCER WORLD CUP 19-22 December 2013 Palais des Sports Nantes

MORE INFORMATION ON [WWW.TABLE-SOCCER.ORG](http://WWW.TABLE-SOCCER.ORG)

# TABLE OF CONTENTS

## 01 INTRODUCTION

*p3 World Cup and World Championships*

*p4 Important dates and division 1*

## 02 TOURNAMENT INFORMATION

*p5 Tournament venue*

*p5 Welcome party*

*p6 Highlights*

*p7 Competition Schedule*

*p8 World Cup and World Championships*

*p9-10 Prizes*

*p11 Dress code and table picks*

*p12 Eurosport - broadcasting partner*

*p13 Kozoom - production partner*

*p14 TST handle change system*

*p15 2012 World Cup partners*

## 03 CONTACT INFORMATION

*p15 ITSF*

[www.table-soccer.org](http://www.table-soccer.org)



# 01 INTRODUCTION

## ➤ WORLD CUP AND WORLD CHAMPIONSHIPS

The International Table Soccer Federation (ITSF) and its partners are happy to introduce the :

### **2014 ITSF TABLE SOCCER WORLD CUP**

The organization of this event has been delegated to the French Table Soccer Federation, the FFFT.

**5 separate team events:  
Men's, Women's, Junior, Senior and Disabled**

The 2014 World Cup will also feature the 2013 **World Championships**, during which players will compete in **Singles and Doubles** in the following categories :

**Men, Women, Junior and Senior**; as well as the **Disabled Doubles category and Disabled Singles category (goalie war)**, where players in wheel-chairs compete on specially designed tables.



## 📌 IMPORTANT DATES

### WORLD CUP :

National federations must confirm that they would like to take part in the World Cup and must announce the choice of the table for each team by :

**October 15th, 2013**

National federations must announce their team members by :

**November 15th, 2013**

The press conference and the draw, to determine the World Cup groups will take place on :

**December 2nd, 2013**

### WORLD CHAMPIONSHIPS :

As for national champions of each ITSF member federations, they must :

- either qualify in the official national qualifying tournament in their country
- OR, if there is no national championship in their country, they must be announced by national federations by:

**November 4th, 2013**

This is also the deadline for announcing the choice of tables for all players.  
When there is no qualifying event in a country, then the selection process must take place under fair, objective and democratic rules.

### 🕒 Division 1 :

We remind that Division 1 will consist of the following teams :

- BELGIUM
- GERMANY
- USA
- FRANCE
- GREAT BRITAIN
- AUSTRIA
- POLAND
- IRAN
- DENMARK
- NETHERLANDS
- CZECH REPUBLIC
- LUXEMBOURG
- ITALY
- PORTUGAL
- CANADA
- SLOVAKIA

# 02 TOURNAMENT INFORMATION

## ➤ TOURNAMENT VENUE

**NANTES** (pop. 550 000) is France's sixth largest city, and the largest city in western France. Nantes is just 2 hours from Downtown Paris by high speed train (TGV) which runs every hour. Also the TGV runs straight from the Roissy-Charles de Gaulle international airport to Nantes city centre in 3 hours. Air France, Ryan Air, Volotéa and Easy Jet run daily flights to Nantes from numerous countries. For more information on Nantes, visit the website of the [tourism information centre](#).

The City of Nantes, Nantes Métropole, the Department of Loire-Atlantique and the Pays-de-la-Loire Region are proud to host this major event for the fifth year, and will be happy to welcome all qualified players and national teams to Nantes.

## ➤ TOURNAMENT HALL

The 2014 edition is going to be a new twist with a new place: the Table Soccer World Cup will be organized at the **Palais des Sports**, a famous sporting area of Nantes.

Situated in the heart of the «Ile de Nantes» in an exceptional setting, the Palais des Sports benefits from a great view of the bank of the river «Loire» and is easily accessible to the City center.



Address: Palais des Sports - Rue André Tardieu - 44200 Nantes - FRANCE

## ➤ HIGHLIGHTS

**Wednesday, December 18<sup>th</sup>**, from 8:00 pm to 11:00 pm - **Welcoming party** for players, partners and press

Meeting point : Bar «**Wilton**» - 21 rue de Rieux - 44000 Nantes

### DAY 1 / Thursday, December 19<sup>th</sup>

*[Web Streaming starting at 02:00 pm]*

- 09:00 am:** Singles events - qualification
- 01:00 pm:** Doubles events - qualification
- 04:30 pm:** Singles events - elimination
- 08:00 pm:** Women's, Junior, Senior and Disabled Singles - finals
- 08:45 pm:** Men's singles - semi finals
- 09:30 pm:** Men's Singles - final

### DAY 3 / Saturday, December 21<sup>st</sup>

*[Web Streaming starting at 02:00 pm]*

- 09:00 am:** Team events - qualification (continued)
- 02:00 pm:** Award Ceremony (Singles and Doubles events)
- 03:00 pm:** Team events - elimination
- 06:00 pm:** Men's World Cup - 1/4 finals  
Women's, Junior, Senior World Cups - semi finals
- 07:00 pm:** Referee clinic
- 08:00 pm:** Women's, Junior, Senior World Cups - 3rd place  
Disabled World Cup - final
- 08:45 pm:** Men's World Cup - last 1/4 final

*All competitions broadcast live on Kozoom*

### DAY 2 / Friday, December 20<sup>th</sup>

*[Web Streaming starting at 02:00 pm]*

- 09:00 am:** Team events - qualification
- 02:00 pm:** Doubles events - elimination
- 05:00 pm:** Opening ceremony
- 06:00 pm:** *VIP Tournament* (VIP room)
- 07:00 pm:** Women's, Junior, Senior and Disabled Doubles - finals
- 08:45 pm:** Men's Doubles - semi final
- 09:45 pm:** Men's Doubles - final

### DAY 4 / Sunday, December 22<sup>nd</sup>

*[Web Streaming starting at 10:00 am]*

- 10:00 am:** Men's World Cup D1 - 1st semi final  
Men's World Cup D2 - semi finals
  - 12:00 am:** Men's World Cup D1 - 2nd semi final  
Junior's World Cup - final  
Senior World Cup - final  
Men's World Cup D2 - 3rd place
  - 02:00pm:** Men's World Cup D1 - 3rd place  
Men's World Cup D2 - final  
Women's World Cup - final
  - 04:00 pm:** Men's World Cup - final
  - 06:00 pm:** Award Ceremony
  - 08:00 pm:** Farewell party for players, partners and the press
- Meeting point : Bar «**Wilton**» - 21 rue de Rieux - 44000 Nantes

➤ p.6

## COMPETITION SCHEDULE

### MEN'S SINGLES

**Qualification**

Thursday 19, 09:00 am - 32 qualified players

**Elimination**

Thursday 19, 04:30 pm

**Semi-final & finals**

Thursday 19 -

### WOMEN'S SINGLES

**Qualification**

Thursday 19, 09:00 am - 32 qualified players

**Elimination**

Thursday 19, 04:30 pm

**Final**

Thursday 19, 08:00 pm

### JUNIOR SINGLES

**Qualification**

Thursday 19, 09:00 am - 16 qualified players

**Elimination**

Thursday 19, 04:30 pm

**Final**

Thursday 19, 08:00 pm

### SENIOR SINGLES

**Qualification**

Thursday 19, 09:00 am - 16 qualified players

**Elimination**

Thursday 19, 04:30 pm

**Final**

Thursday 19, 08:00 pm

### MEN'S DOUBLES

**Qualification**

Thursday 19, 01:00 pm - 32 qualified teams

**Elimination**

Friday 20, 02:00 pm

**Semi-final & finals**

Friday 20 -

### WOMEN'S DOUBLES

**Qualification**

Thursday 19, 01:00 pm - 32 qualified teams

**Elimination**

Friday 20, 02:00 pm

**Final**

Friday 20, 07:00 pm

### JUNIOR DOUBLES

**Qualification**

Thursday 19, 01:00 pm - 16 qualified teams

**Elimination**

Friday 20, 02:00 pm

**Final**

Friday 20, 07:00 pm

### SENIOR DOUBLES

**Qualification**

Thursday 19, 01:00 pm - 16 qualified teams

**Elimination**

Friday 20, 02:00 pm

**Final**

Friday 20, 07:00 pm

### MEN'S WORLD CUP

**Qualification**

Friday 20, 09:00 am - 16 qualified teams

**Elimination**

Saturday 21, 03:00 pm  
- last 1/4 final

**Final**

D2 - Sunday 22, 12:00 am / 3rd place :  
Sunday 22 in the morning  
D1 - 3rd place : Sunday 22, 2:00 pm  
D1 - Sunday 22 -

### WOMEN'S WORLD CUP

**Qualification**

Friday 20, 09:00 am - 8 qualified teams

**Elimination**

Saturday 21, 03:00 pm

**Final**

3rd place : Sunday 22 in the morning  
Sunday 22, 02:00 pm

### JUNIOR WORLD CUP

**Qualification**

Friday 20, 09:00 am - 8 qualified teams

**Elimination**

Saturday 21, 03:00 pm

**Final**

3rd place : Sunday 22 in the morning  
Sunday 22, 12:00 am

### SENIOR WORLD CUP

**Qualification**

Friday 20, 09:00 am - 4 qualified teams

**Elimination**

Saturday 21, 03:00 pm

**Final**

3rd place : Saturday 21, 8:00 pm  
Sunday 22, 12:00 am

### DISABLED WORLD CUP

**Qualification**

Friday 19, 09:00 am

**Elimination**

Saturday 20, 03:00 pm

**Final**

Saturday 20, 08:00 pm

### DISABLED SINGLES

(GOALIE WAR)

**Qualification**

Thursday 19, 09:00 am

**Elimination**

Thursday 19, 04:30 pm

**Final**

Thursday 19, 08:00 pm

### DISABLED DOUBLES

**Qualification**

Thursday 19, 01:00 pm

**Elimination**

Friday 20, 02:00 pm

**Final**

Friday 20, 07:00 pm

## WORLD CUP AND WORLD CHAMPIONSHIPS

More details by clicking here about:

# GROUP DRAW & SPORTS INFORMATION





## 👉 PRIZES

---

This year again, players won't have to pay any entry fees to take part in the World Cup.

This is meant to help all players and especially those who come from far away and have high travel expenses.

Also, as last year, the ITSF has committed itself to allocating prizes more fairly, in order to make sure that «grass root» table soccer can grow at the same time as high-level competitive table soccer.

## Over € 50 000 worth of prizes! No entry fees!

### 1 - Tables - over € 20 000

---

16 tables from our five official manufacturers are awarded to ITSF member federations:

- to the winner in each World Cup category, and also to the 2nd of the Men D1 World Cup (Only one table can go to a federation. In case a federation wins 2 or more events, the table will go to the 2nd place federation)
- to 2 federations in countries with low financial resources
- to 2 federations as acknowledgment of their work to develop table soccer in their country

In each of the above cases, the tables donated to federations will not be their "home" tables; the brands of tables will be determined for each federation by the ITSF Sports Commission.

### 2 - WCS Packs - over € 5 000

---

Apart from medals, the first 4 winners in each World Championships category

(Men's, Women's, Junior, Senior and Disabled) are awarded World Championship Series (WCS) packages so they can attend WCS events during the 2014 Tour.

Each time, packages are awarded to players who are not members of the federation awarding the package, so that competitors are encouraged to attend other WCS events than the one taking place in their country.

Please note that these packages are not transferable to other players.

## ➤ PRIZES

### 3 - Travel Packages - € 25 000

Up to 62 qualified players can benefit from a travel package to attend the World Cup (each package amounts to € 250 to € 800 depending on where they reside).

#### Qualified Players entitled to travel packages :

	WORLD RANKINGS	WCS	INTERNATIONAL
Men's Singles	Top 16	Top 3	Top 1
Women's Singles	Top 8	Top 1	X
Junior Singles	Top 3	Top 1	X
Senior Singles	Top 3	Top 1	X

Travel packages are available for these players ONLY and only when their federation is an ITSF Regular Member.

#### Each package amounts to € 250 to € 800 depending on country of origin :

CONTINENTS	PACKAGES
Europe	€ 250
Africa	€ 500
North America	€ 700
Asia, Central and South America, Oceania	€ 800

The travel package will be given at the World Cup.

## ➤ DRESS CODE AND TABLE PICKS

### SPORT DRESS :

- Each player must have 4 “national” shirts: one for each day of the event. A jogging suit (top and bottom) is also required of all players.
- The name of the country must be clearly displayed on the players’ shirts and jogging suit; players can also add their names and country’s flag on their shirts and jogging suits, if they wish.
- Players must wear their national shirt during ceremonies and matches; players who do not abide by this rule will not be allowed to compete. Players are strongly encouraged to wear their national sport dress during the whole event, even if they don’t play every day.
- Partners in Doubles events must wear exactly the same sport dress.
- Regarding sponsor logos, we are subject to restrictions due to the broadcast of our main events on TV. For example, please note that no alcohol or tobacco brand names can be shown on Eurosport 2, and since blurring the names during broadcast would imply extra work, this could have an incidence on which matches would be chosen for the broadcast.



➤ **Bonzini** (France)  
[www.bonzini.com](http://www.bonzini.com)



➤ **Garlando** (Italy)  
[www.garlando.it](http://www.garlando.it)



➤ **Roberto Sport** (Italy)  
[www.robortosport.it](http://www.robortosport.it)



➤ **Leonhart** (Germany)  
[www.original-leonhart.com](http://www.original-leonhart.com)



➤ **Fireball** (China)  
[www.tablesoccer.com](http://www.tablesoccer.com)

### TABLES

- For the World Championships, qualified players and national champions must choose their table by **October 31st, 2013**, at the latest, except when national championships take place later.
- For the World Cup, national federations must announce the choice of the table for each team (the Men’s, Women’s, Junior and Senior teams from the same country can choose different tables) by **October 31th, 2013**.
- Players/teams cannot change their choice of table during the tournament.

If 2 opponents/teams have chosen the same table, they will play on one.

## EUROSPORT 2 - BROADCASTING PARTNER

A member of the TF1 group, the Eurosport 2 channel gathers the largest audiences of the cable (source: Sport Strategies), which makes it one of the major actors of sport in Europe and worldwide. The Eurosport 2 channel broadcasts in nearly **50 million homes**.



[www.eurosport.fr](http://www.eurosport.fr)

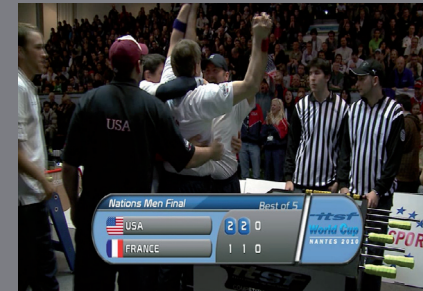


### Asia and Pacific Countries

1. Australia
2. Indonesia
3. Malaysia
4. Brunei
5. Hong Kong
6. Singapore
7. Fiji Islands
8. South Korea
9. Myanmar
10. Tonga Islands
11. Philippines
12. Sri Lanka
13. Vietnam
14. Mongolia
15. Papua-New-Guinea

### 16 LANGUAGES, including

English  
French  
German  
Greek  
Hungarian  
Italian  
Polish  
Portuguese  
Romanian  
Russian  
Serbian  
Swedish  
Turkish



### Western and Northern Europe

1. Austria
2. Belgium
3. Denmark
4. Finland
5. France
6. Germany
7. Ireland
8. Iceland
9. Luxembourg
10. Netherlands
11. Norway
12. Sweden
13. Switzerland
14. United Kingdom

### Southern Europe and Mediterranean countries

1. Cyprus
2. Spain
3. Greece
4. Italy
5. Lebanon
6. Malta
7. Portugal
8. Turkey
9. Israel



### Central and Eastern Europe and other countries

1. Albania
2. Armenia
3. Azerbaijan
4. Belarus
5. Bosnia-Herzegovina
6. Bulgaria
7. Croatia
8. Czech Republic
9. Estonia
10. Georgia
11. Hungary
12. Kazakhstan
13. Latvia
14. Lithuania
15. Macedonia
16. Moldavia
17. Montenegro
18. Poland
19. Romania
20. Russia
21. Serbia
22. Slovakia
23. Slovenia
24. Ukraine

## ➤ KOZOOM - PRODUCTION PARTNER

With its 10 years of experience, this company, based in France, became well known by filming billiard tournaments throughout the world.

In April 2008, Kozoom was the first company to record a billiard tournament - the Artistic Billiard World Championships - in high definition.

Since 2009, Kozoom filmed the ITSF Table Soccer World Cup. The programs they produced were then broadcast on the Eurosport 2 TV channel. A new step was reached in January 2011 with the first LIVE broadcasting. In 2013, ESPN3 and Eurosport 2 broadcast in LIVE the Men's Final.



## ➤ KOZOOM STORE - OFFICIAL PARTNER STORE

ITSF partnership with Kozoom has moved one step further with a store available online where you will find all your favourite ITSF sanctioned products: tables, balls, handles, accessories, videos...



## ➤ TST - HANDLE CHANGE SYSTEM



As in the 2013 WCS events, the TST handle change system will be used at the 2014 World Cup.

- All tables from all 5 brands (Bonzini, Garlando, Roberto Sport, Leonhart and Fireball) will be set up without handles, so that the TST Company can install its handle adaptors on all tables one day before the tournament start.
- Competitors will play exclusively with the handles and handle change system provided by the TST Company.
- Players who do not yet have their own handles will be able to buy or rent some from the TST Company.

Visit the TST website at :

[www.tst-systems.com](http://www.tst-systems.com)

**Handles for rent:**

**2,50 euros per handle**

➤ **TABLE SOCCER WORLD CUP PARTNERS**

➤ **INSTITUTIONAL PARTNERS**



➤ **OFFICIAL TABLES PARTNERS**



➤ **MEDIA PARTNERS**



➤ **SUPPLIERS PARTNERS**



➤ **ACCOMMODATION PARTNER**



## 03 CONTACT US



+33 (0)2 40 47 90 84

✉ : **International Table Soccer Federation**  
3 rue Clermont  
44000 Nantes  
FRANCE

*(from Monday to Friday 9:00 am - 12:00 pm – 1:30 pm - 4:30 pm)*

📞: +33 (0)2 40 47 90 84

📠: +33 (0)2 40 20 44 59

@: info@table-soccer.org

💻: www.table-soccer.org